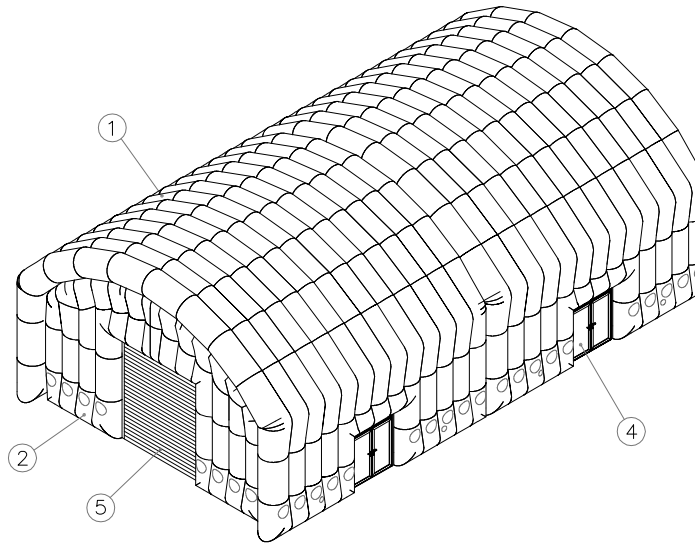
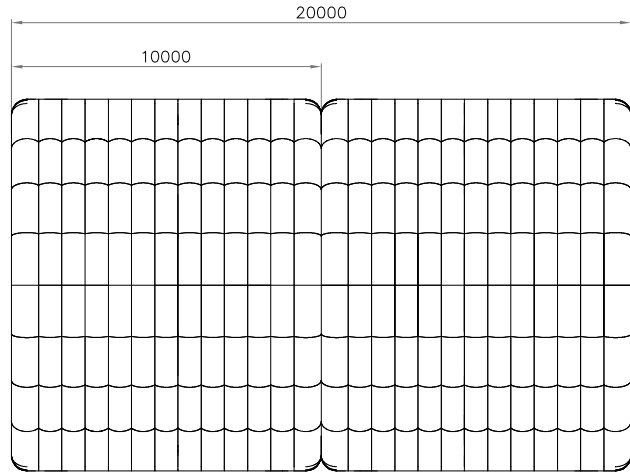
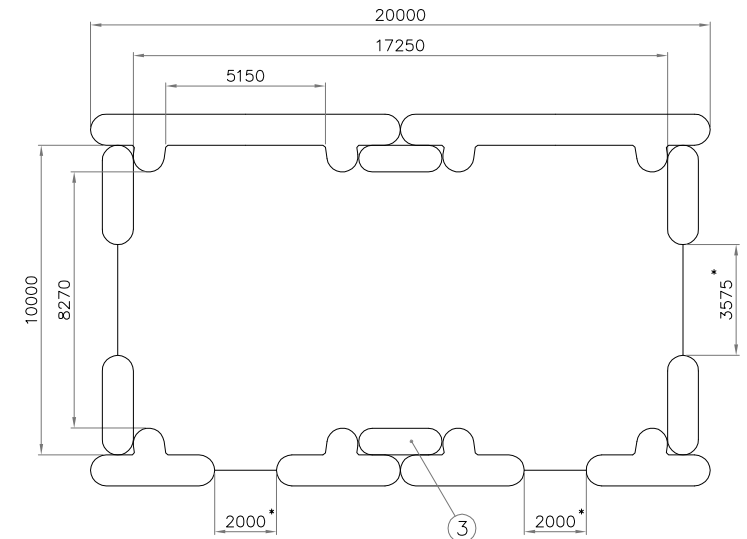
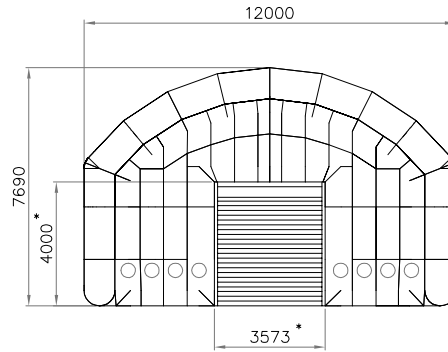
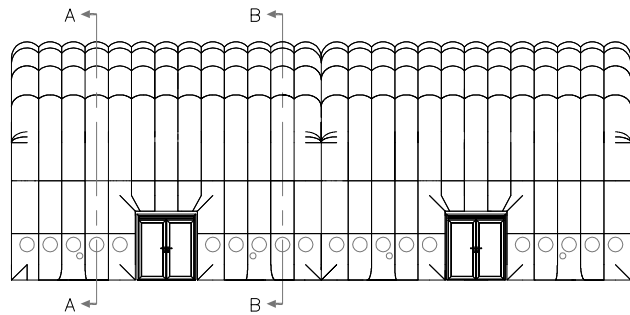


RevNo	Revision note	Date	Signature	Checked
1	INITIAL ISSUE	3/4/20	DK	SC

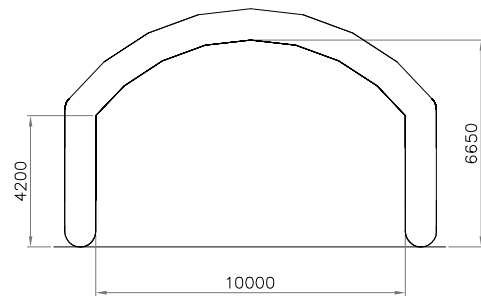


ITEM	DESCRIPTION	SUPPLIER	PART NO.	QTY
1	10m Arch Module			2
2	Roller Shutter End Wall			2
3	Joining Section			1
4	Double Door Assembly		MI-005-001	2
5	Roller Shutter Door Assembly	TBD	TBD	1

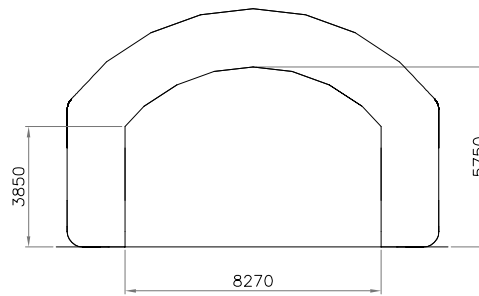


* SIZE OF APERTURE IN INFLATABLE STRUCTURE. USABLE DIMENSION WILL BE REDUCED DEPENDING UPON THE TYPE OF DOORWAY FITTED


SECTION A-A



SECTION B-B



All dimensions in mm U.O.S.

Drawn by D.Ketsall	Checked by S. Casselman	Approved by D.Ketsall	Date 3/4/20	Scale CAD 1:1 PAPER NTS
10m (Internal) Span Warehouse General Arrangement			Material	 tectoniks
CS-027-001			Colour	
Edition 1	Sheet 1 OF 2	Tolerance U.O.S. +/- 5%		