

INTRODUCING OUR **MODULAR COLD STORE RANGE**

Cost Effective, Reliable And Sustainable Refrigerated Modular Complexes



-40°C to +45°C MODULAR
POLAR°STORE
SOLUTIONS THAT STACK UP

Dawsongroup | global
Asset specialists since 1935



Main features

Polar°store Modular allows you to combine single cold stores to form complexes of connected multiple cold stores. These can be joined to permanent buildings, used inside existing buildings or even form a separate outdoor complex. They are built to become a critical part of your businesses process and storage chain, yet they are installed and setup with ease anywhere in the world. The complexes can be built using both 20ft and 40ft cold stores and come with the standard features of our single cold store range with a temperature set point from -40°C up to +45°C.

Standard features

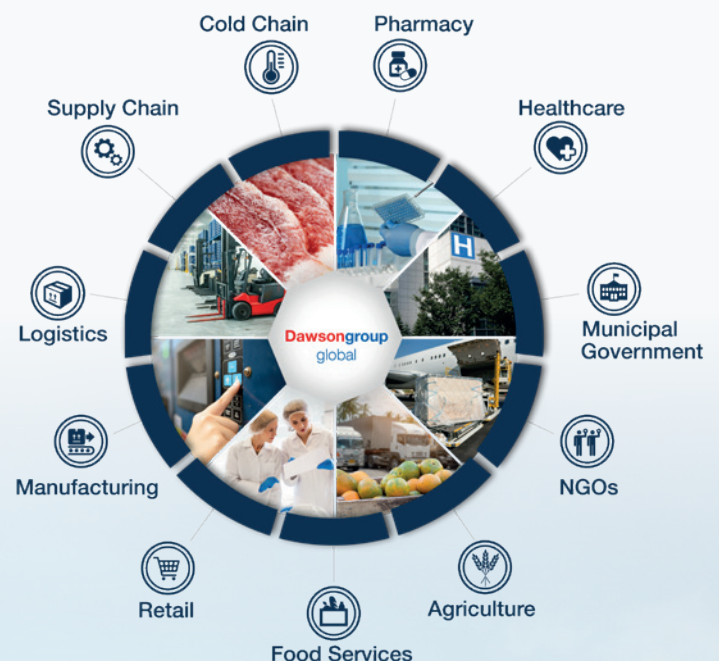
- All our units are High Cube (9ft6") (2.9m)
- Easy open double doors with 70/30 split
- Internal release & lockable door handle
- Flat Floor with 4 drain holes
- LED internal lighting
- Sliding strip curtain
- Door cut out switch
- Audio & visual person trapped alarm
- Audio & visual mains failure alarm
- Semi-permanent loading ramp
- Plug and play
(18m cable, 5 pin plug, 440v, 3ph, earth & neutral)
- -40°C to +45°C

Optional Features

- Remote temperature monitoring
- Support legs for dock loading or uneven ground
- Internal shelving
- Clip on generator set for intermittent mains power

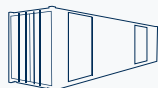
Why Dawsongroup | global?

Being part of Dawsongroup we bring over 85 years' worth of asset rental and ownership experience. Dawsongroup plc, is a privately owned group of companies specialising in commercial asset rental. The group has grown to cover specialisations in temperature-controlled solutions for hire and sale. The group has developed on the back of our innovation and a commitment to service excellence and gives its clients an increased capability without risking capital and endow them with the flexibility to say 'yes' to any growth opportunities.



Product range

Please see the chart below to see the different sizes and temperature ranges available for our modular cold stores. If you have a more bespoke request, we can easily accommodate these, including:



**Single or multi
side access**



**Pharma Spec
(GDP Compliant)**



**Multiple
refrigeration systems**



**Dual Temp
Compartments**

Just contact a member of the team via mobile or Whatsapp on +44 (0) 7557 176 680,
landline on + 44 (0) 345 0344 144 or email at info@dgglobal.org

| | Height | Length | | 2 bay | 3 bay | 4 bay | 5 bay | 6 bay | 7 bay |
|-------------------------|-------------|--------------|---------------------|-------|-------|-------|--------|--------|--------|
| Exterior measurements | | | | | | | | | |
| 20ft Complex | 2,900 mm | 6,058 mm | Width (mm) | 4,950 | 7,450 | 9,824 | 12,450 | 14,478 | 17,450 |
| | | | UK pallets | 22 | 34 | 46 | 58 | 70 | 82 |
| | | | Euro pallets | 18 | 27 | 36 | 47 | 57 | 67 |
| 40ft Complex | 2,900 mm | 12,192 mm | Width (mm) | 4,950 | 7,450 | 9,824 | 12,450 | 14,478 | 17,450 |
| | | | UK pallets | 49 | 76 | 103 | 130 | 157 | 184 |
| | | | Euro pallets | 42 | 64 | 86 | 108 | 130 | 152 |

We can create modular complexes of any width or length please get in touch for any bespoke sizes required.



**5-year warranty on
new refrigeration units**



**Global
service network**



**Delivery
worldwide**



**24/7
Breakdown line**



**Full on hire
maintenance**

POLAR°STORE

SOLUTIONS THAT STACK UP

- COLD ROOM
- BLAST FREEZER & CHILLER
- SUPERFREEZER
- MODULAR
- MEAT RAIL

Dawsongroup plc

Dawsongroup | global

Dawsongroup | Europe

Dawsongroup | UK

For all enquiries:

Please call **+44 (0) 7557 176 680** | **+44 (0) 345 0344 144** or email **info@dgglobal.org**

Visit our website at **dgglobal.org** or search Dawsongroup global

